

RECREATIONAL FLOOR PLAN (4TH LEVEL)



UNIT 7
 1 bedroom - 1 bath
 745 S.F. /69.21m²
 Terrace: 750 S.F. / 69.67m²

Kitchen
 9'-0" x 9'-3"/2.74 m x 2.86 m

Living Room
 21'-3" x 13'-0"/6.52 m x 3.96 m

Bedroom
 11'-4" x 13'-0"/3.44 m x 3.96 m
 Walk in closet
 5'-8" x 6'-5"/1.56 m x 1.88 m

UNIT 6
 1 bedroom - 1 bath
 690 S.F. /64.1m²
 Terrace: 844.7 S.F. / 78.47m²

Kitchen
 8'-3" x 8'-4"/2.51 m x 2.53 m

Living Room
 12'-7" x 19'-11"/3.85 m x 6.06 m

Bedroom
 12'-7" x 13'-1"/3.85 m x 3.59 m
 Walk in closet
 6'-5" x 5'-4"/1.98 m x 1.6 m

UNIT 5
 2 bedroom - 2 bath
 1,225 S.F. /113.8m²
 Terrace: 1,441.5 S.F. / 133.9m²

Kitchen 10'-0" x 8'-8" / 3.05 m x 2.67 m
Living Room 24'-4" x 11'-0" / 7.4 m x 3.35 m
Bedroom 11'-5" x 12'-0" / 3.47 m x 3.65 m
Walk in closet 7'-7" x 5'-5" / 1.78 m x 1.64 m
Master Bedroom 12'-3" x 12'-0" / 3.75 m x 3.65 m
Walk in closet 7'-7" x 10'-5" / 2.32 m x 3.16 m

UNIT 4
 3 bedroom - 2 bath
 1,570 S.F. / 145.86m²
 Terrace: 617.9 S.F. / 57.4m²

Kitchen 8'-4" x 11'-3" / 2.53m x 3.45m
Living Room 19'-11" x 14'-4" / 5.82m x 4.34m
Bedroom 2 12'-0" x 11'-9" / 3.65m x 3.56m
Walk in closet 6'-9" x 5'-6" / 2.05m x 1.67m
Bedroom 3 13'-0" x 11'-9" / 3.96m x 3.58m
Walk in closet 5'-0" x 9'-8" / 1.52m x 2.95m
Master Bedroom 12'-10" x 14'-4"/3.91 m x 4.34 m
Walk in closet 6'-11" x 7'-1" / 2.10m x 2.17m

UNIT 3
 2 bedroom - 2 bath
 1,175 S.F. /109.16m²
 Terrace : 1435.2 S.F. / 133.3m²

Kitchen 10'-0" x 8'-8"/3.05 m x 2.65 m
Living Room 11'-0" x 24'-7"/3.35 m x 7.32 m
Bedroom 12'-4" x 11'-11"/3.73 m x 3.63 m
Walk in closet 7'-7" x 5'-5"/2.31 m x 1.64 m
Master Bedroom 12'-0" x 11'-6"/3.65 m x 3.5 m
Walk in closet 5'-8" x 7'-3"/1.73 m x 2.21 m

UNIT 1
 1 bedroom - 1 bath
 745 S.F. /62.21m²
 Terrace: 711S.F. / 66.1m²

Kitchen
 9'-0" x 9'-3"/2.74 m x 2.86 m

Living Room
 21'-3" x 13'-0"/6.52 m x 3.96 m

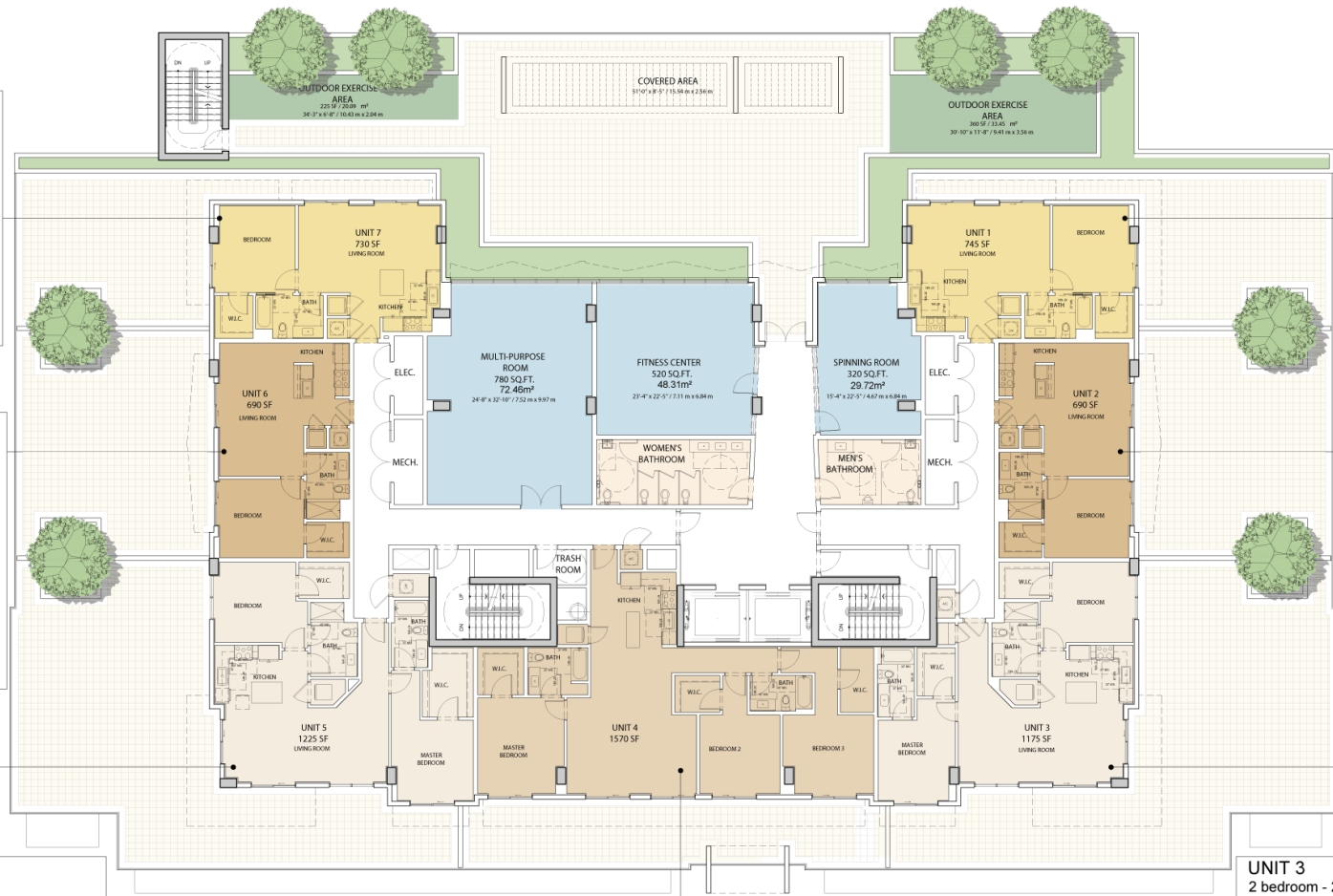
Bedroom
 11'-4" x 13'-0"/3.44 m x 3.96 m
 Walk in closet
 5'-8" x 6'-5"/1.56 m x 1.88 m

UNIT 2
 1 bedroom - 1 bath
 690 S.F. /64.1m²
 Terrace: 844.7 S.F. / 78.47m²

Kitchen
 8'-3" x 8'-4"/2.51 m x 2.53 m

Living Room
 12'-7" x 19'-11"/3.85 m x 6.06 m

Bedroom
 12'-7" x 13'-1"/3.85 m x 3.59 m
 Walk in closet
 6'-5" x 5'-4"/1.98 m x 1.6 m



Stated dimensions are measured to the exterior boundaries of the exterior walls and the centerline of interior demising walls and in fact vary from the dimensions that would be determined by using the description and definition of the "unit" set forth in the Declaration (which generally only includes the interior airspace between the perimeter walls and excludes interior structural components), which will typically be smaller. Note that measurements of rooms set forth on the floor plan(s) above are generally taken of the greatest points of each given room (as if the room were a perfect rectangle), without regard for any cutouts. Accordingly, the area of the actual room will typically be smaller than the product obtained by multiplying the stated length times width. All dimensions and square footages are approximate based on preliminary plans and may vary with actual construction. The floor plan(s) above represents the typical floor plan for the residence type indicated, but the actual floor plan of a specific residence may differ. All floor plans and development plans are proposed and conceptual only, and are subject to change. See Legal Disclaimers on Final Page.